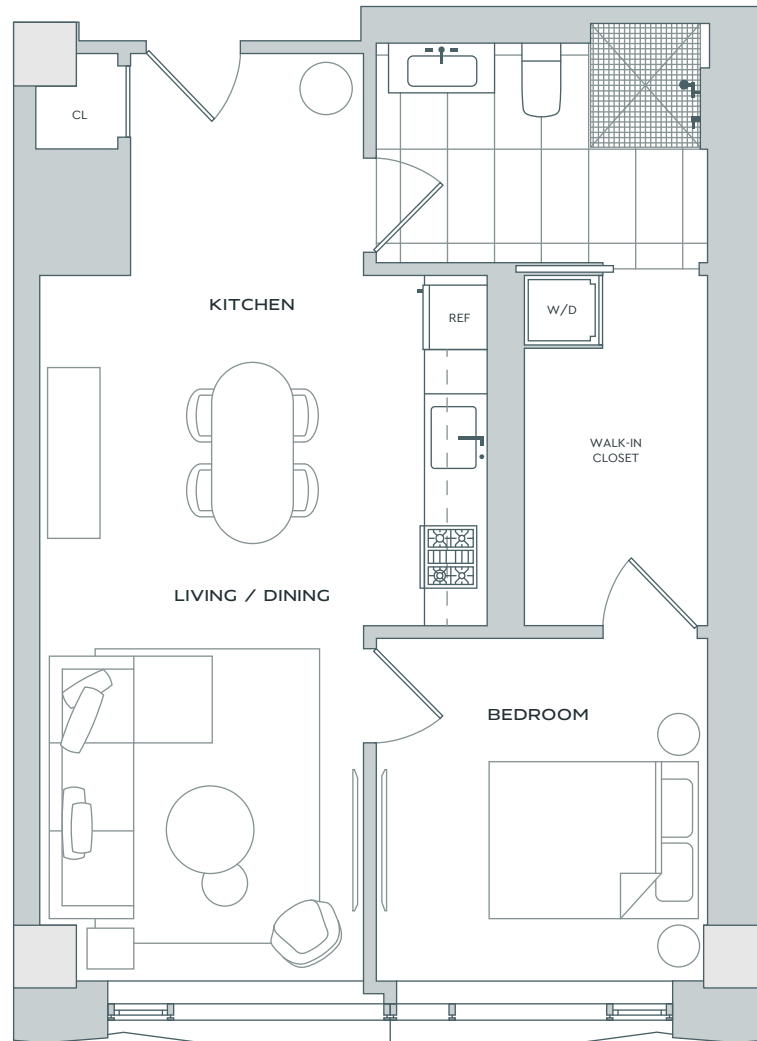


1 BED, 1 BATH

# TYPE 03

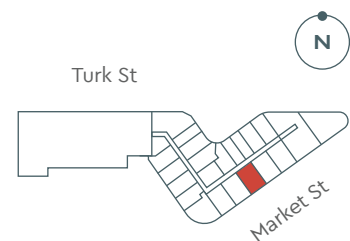
~640 sq ft | Even Floors



■ Exposed concrete

## AMENITIES

- |                             |                                       |               |
|-----------------------------|---------------------------------------|---------------|
| Attended Lobby              | Storage                               | Restaurants   |
| Fitness Center              | Secure Parking with Charging Stations | Roof Deck     |
| Rooftop Solarium and Lounge | Bicycle Parking                       | LINE SF Hotel |
| Private Dining              | Pet Spa                               | Retail        |



For more information, you can visit [serifs.com](http://serifs.com) or stop by our sales gallery at 944 Market Street, San Francisco, 94102.

© 2019—2020, SERIF | FLOOR PLANS ARE DRAWN TO VARYING SCALES TO MAXIMIZE VISIBILITY WHEN PRINTED. THE FLOOR PLANS, ELEVATIONS, RENDERINGS, FEATURES, FINISHES AND SPECIFICATIONS ARE SUBJECT TO CHANGE AT ANY TIME AND SHOULD NOT BE RELIED ON AS REPRESENTATIONS, EXPRESS OR IMPLIED. SQUARE FOOTAGE OR FLOOR AREAS SHOWN IN ANY MARKETING OR OTHER MATERIALS IS APPROXIMATE AND MAY BE MORE OR LESS THAN THE ACTUAL SIZE. REAL ESTATE CONSULTING, SALES AND MARKETING BY POLARIS PACIFIC - A LICENSED CALIFORNIA, ARIZONA, COLORADO, HAWAII, OREGON AND WASHINGTON BROKER - CA DRE #1499250.



IT'S ALL  
IN THE  
DETAILS.

**SERIF**

IT'S ALL